



FreshWater®  
Salt System Ready



100% Filtration  
SilentFlo Circulation



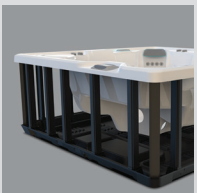
Moto-Massage® DX



Super Energy  
Efficient



Wireless Remote



Polymer Substructure  
& Base Pan

## HIGHLIFE® COLLECTION



# GRANDEE®



Shown with Alpine White Shell  
and Java Cabinet

<b>People</b>	<b>Seating</b>	<b>Jets</b>	<b>Voltage</b>
7 Seats	Open	49 Jets	230 V

**Size**  
8'4" x 7'7" x 38" | 254 cm x 231 cm x 97 cm

**Water Care**  
FreshWater® Salt System Ready



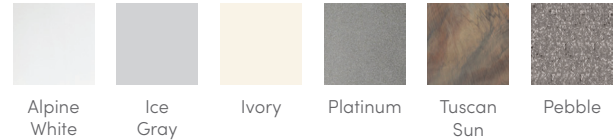
# HIGHLIFE® COLLECTION GRANDEE®



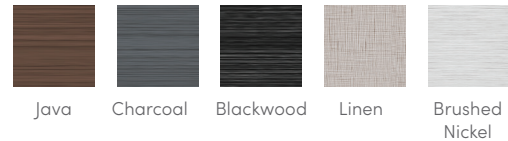
freshwater™  
Salt System



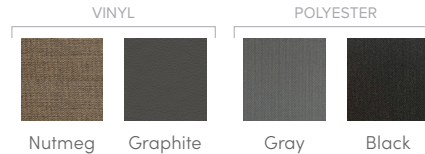
## SHELL COLORS



## CABINET COLORS



## COVER COLORS



## CABINET AND SHELL COLOR OPTIONS\*

Cabinet Colors	Java	Charcoal	Blackwood	Linen	Brushed Nickel
<b>Shell Colors</b>	Alpine White Ice Gray Ivory Tuscan Sun Pebble	Alpine White Ice Gray Platinum Tuscan Sun Pebble	Alpine White Ice Gray Platinum	Alpine White Ivory Tuscan Sun Pebble	Alpine White Ice Gray Platinum

## LEGENDARY MESSAGE

### 49 Personalized-Control Jets

- 2 Moto-Massage® Seats
- Soothing Stream® Seat
- Precision® Jet Seat
- HydroStream® Seat

## EASY WATER CARE

<b>Water Care System</b>	FreshWater® Salt System Ready
<b>Filtration System</b>	100% No-bypass Filtration Exclusive, High-flow Tri-X® Filters Unique, Dual-Action Filtration

## LEADING ENERGY EFFICIENCY

<b>Jet Pump 1</b>	Wavemaster® 9000; One-speed, 2.5 HP Continuous Duty, 5.2 HP Breakdown Torque
<b>Jet Pump 2</b>	Wavemaster® 9200; Two-speed, 2.5 HP Continuous Duty, 5.2 HP Breakdown Torque
<b>Circulation Pump</b>	SilentFlo 5000® for quiet, continuous filtration
<b>Heater</b>	Titanium No-Fault® 4,000 W / 230 V
<b>Insulation</b>	Multiple Layers of Foam Insulation; Certified to California Energy Commission (CEC) and APSP 14 energy efficiency standards for portable spas
<b>Cover</b>	3.5" to 2.5" tapered, 2 lb. density foam core, with hinge seal

## SIZE

**Dimensions** 8'4" x 7'7" x 38" / 254 cm x 231 cm x 97 cm

## CAPACITY

<b>Seating Capacity</b>	7 seats
<b>Water Capacity</b>	455 gallons / 1,725 liters
<b>Weight</b>	790 lbs. / 360 kg dry; 5,810 lbs. / 2,645 kg filled**

## ADDITIONAL FEATURES

<b>Water Feature</b>	BellaFontana® with 3 illuminated arcs of water
<b>Cover Lifters</b>	CoverCradle®, CoverCradle II, Lift 'n Glide®, or UpRite®
<b>Steps</b>	Steps are available to match cabinet colors
<b>Entertainment</b>	Bluetooth® Wireless Sound System (Optional)
<b>Control System</b>	IQ 2020® with wireless remote control 230 V / 50 amp, 60 Hz (Includes G.F.C.I. protected sub-panel)
<b>Lighting System</b>	Luminescence® multi-color four-zone
<b>Cooling System</b>	CoolZone™ (Optional)

\*No special orders or shell substitutions available. Actual colors and products may vary from print representation. See dealer to verify.  
\*\*Includes water and 7 adults weighing 175 lbs. each.